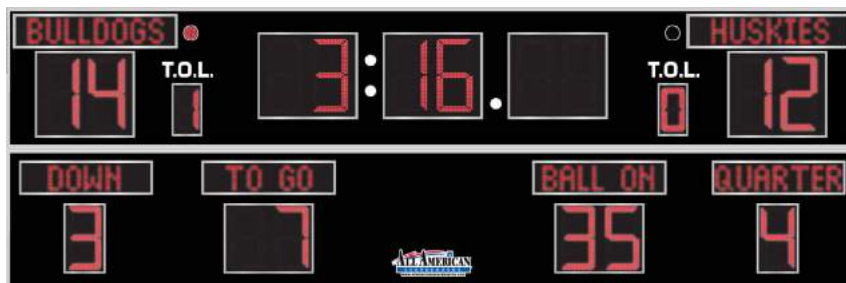


OUTDOOR SCOREBOARD 8424ALHECTN

Football
Baseball
Track
Soccer

**Although this board may technically be used for soccer, an 8724 Soccer Scoreboard is better equipped for multiple sports.*



OVERALL DIMENSION

8' high x 24' wide x 4.7" deep (including built-in mounting channel).

INFORMATION DISPLAYED

Home and Guest Score, Game Time, Time Outs Left, Down, To Go, Ball On, Quarter
Information may vary depending on sport.

DIGITS

24", 21", 14" Bright Red, 7-Segment LEDs.

INDICATORS

4" Bright Red LEDs, Bull's eye configuration.

CAPTIONS

White vinyl letters (TOL). 9" Electronic Programmable LED Captions.

HORN

Horn not included. External 100 dB Vibrating Horn or 120dB Trumpet Horn are available.

CONSTRUCTION

Extruded aluminum frame, .093" thick, mill finish. Powder coated faces made from .050" aluminum with shatter proof polycarbonate windows with aluminum extruded frames. Aluminum backs and internal support structure. Aluminum rivets and stainless steel screws.

STANDARD COLORS (Custom Colors Available)



Black, Navy, Blue, Light Blue, and Red have a Kynar® finish, other standard and custom colors are powder coated or painted enamel.

ELECTRONICS

100% solid state, microprocessor controlled system.

SERVICING

Front access for ease of servicing. Plug in modules for ease of replacement.

MICROPROCESSOR CONTROL CONSOLE



Sold separately. Extruded Aluminum, high impact low profile microprocessor control console, latest state of the art, user friendly. Size: 13.25" wide x 5" high x 9" deep. Weight: 6 lbs. Microprocessor to be supplied with 25 feet of cable (hardwire). Microprocessor control console with membrane keyboard provides for direct entry of all information. Radio Control is available.

JUNCTION BOX

One outdoor rated junction box, 5" x 3" with cover and ethernet cable. (Hardwire)

DATA CABLE

Twisted pair, direct burial, RJ45 Connectors (Hardwire).

POWER REQUIREMENTS

115/230 VAC. 50/60 Hz. Minimum one 20A circuit is recommended.

INSTALLATION

All standard variations typically installed on two posts. Mounting kits are supplied with scoreboard. *NOTE: Number of posts must be determined locally by licenced engineer.*

WEIGHT

Net 742 lbs / Shipping 1025 lbs.

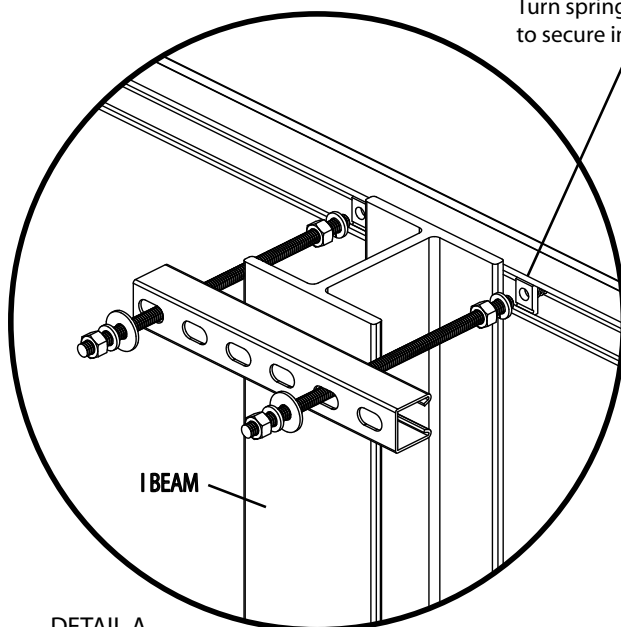
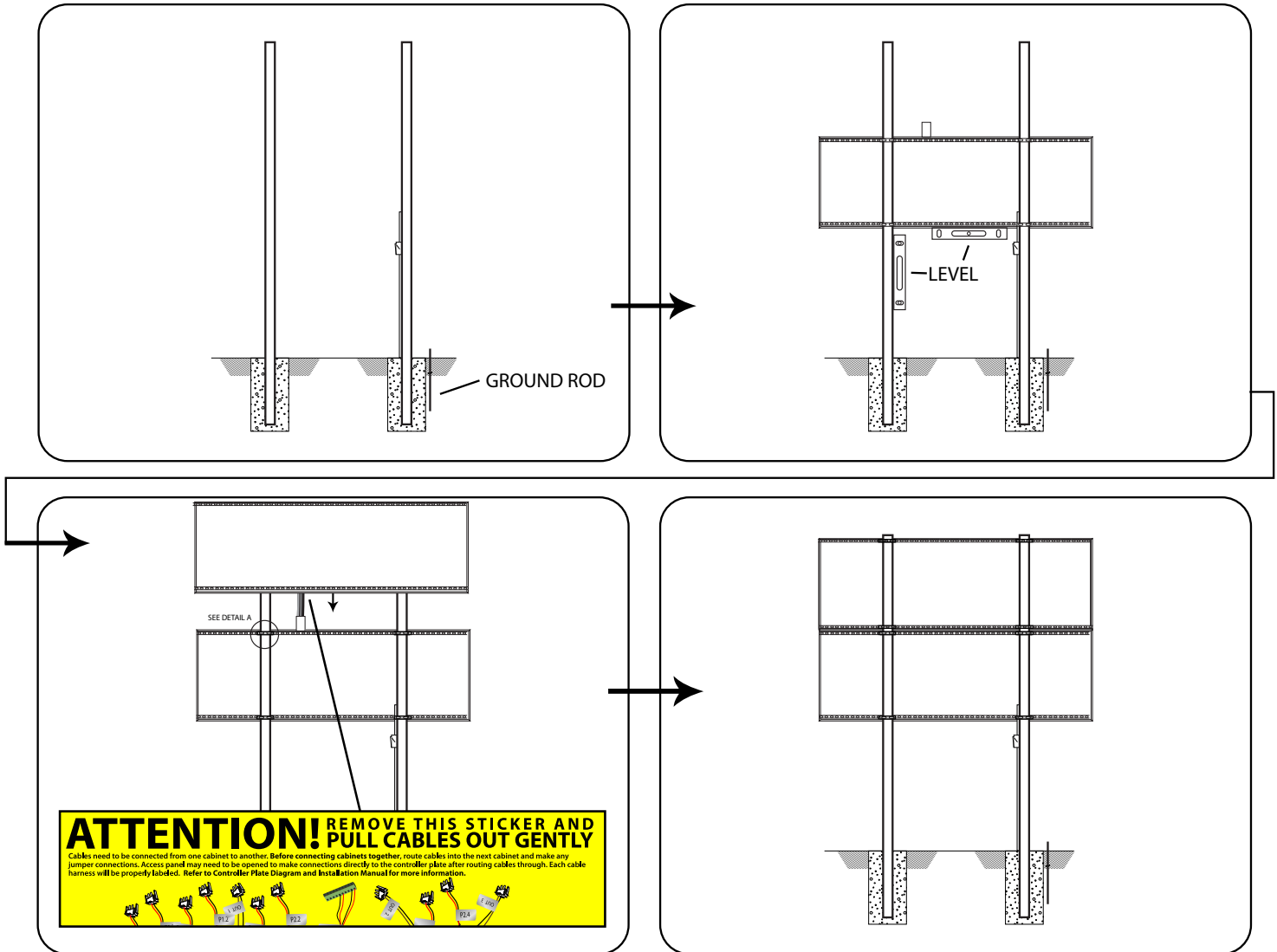
STANDARD VARIATIONS - Add suffix to model number in order that they appear below (see examples on next page)

Model + RV2

Radio upgrade. 2.4 GHz spread spectrum, 1500' expected range.

Typical Double-Cabinet Scoreboard Installation Illustration

NUMBER OF POLES SHOWN ONLY FOR REFERENCE. MUST BE DETERMINED LOCALLY BY LICENCED ENGINEER.

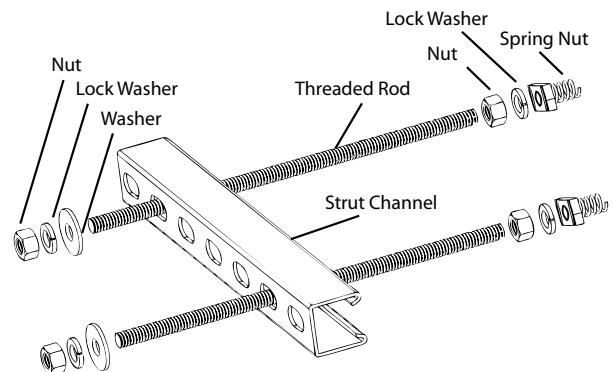


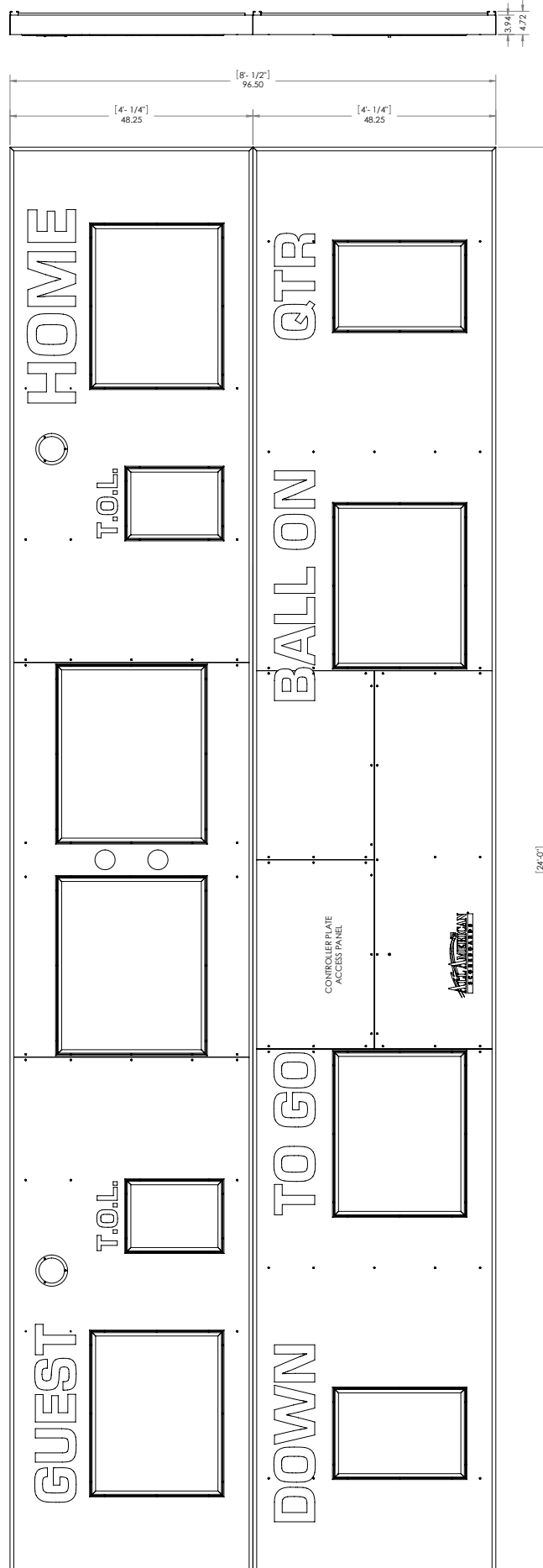
DETAIL A.
Pressure hold scoreboard cabinets to poles.
Secure with weld.

Turn spring nuts clockwise
to secure into strut channel.

Mounting Kit

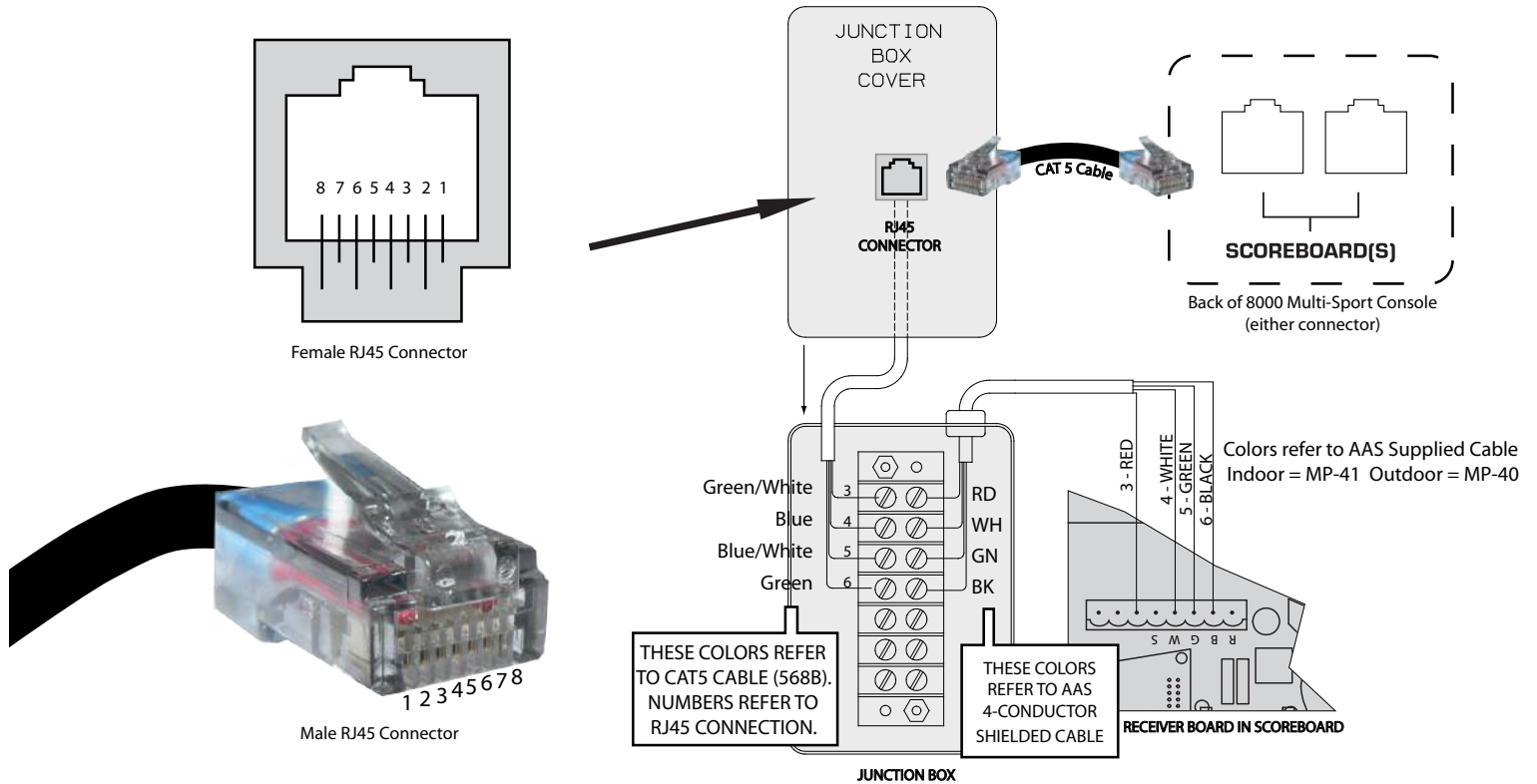
Quantity of kits depends on board and number of poles required.
Installed at every point where a pole and a strut channel intersect.
Local ordinances, soil conditions and wind load requirements may require additional structure.





Hardwire Scoreboard Wiring

With a Standard Junction Box



Wiring a Supplemental Display

With a Single Junction Box

